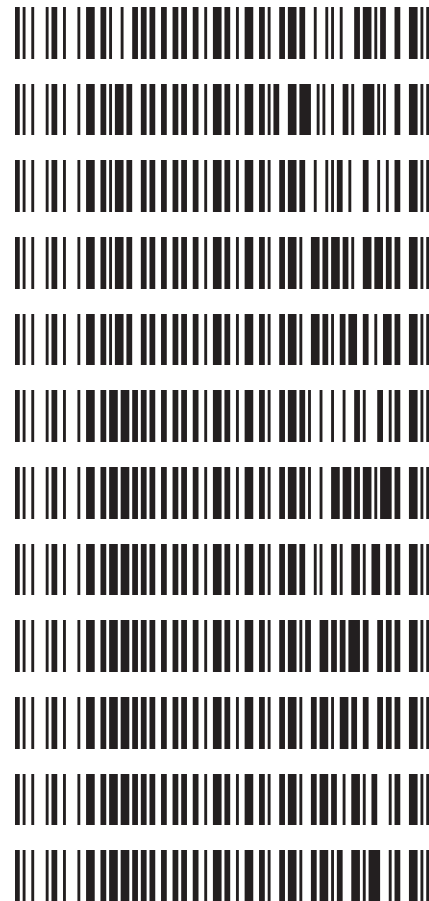


Worklist: 2841

<u>LAB_CASE</u>	<u>ITEM</u>	<u>TASK_ID</u>	<u>DESCRIPTION</u>
C2018-2421	2	134555	AM 3 Urine Carboxy-THC
M2018-5707	2	134556	AM 3 Urine Carboxy-THC
M2018-5868	5	134557	AM 3 Urine Carboxy-THC
M2018-6049	3	134565	AM 3 Urine Carboxy-THC
M2018-6088	4	134566	AM 3 Urine Carboxy-THC
P2018-3426	1	134558	AM 3 Urine Carboxy-THC
P2018-3427	1	134559	AM 3 Urine Carboxy-THC
P2018-3428	1	134560	AM 3 Urine Carboxy-THC
P2018-3471	1	134561	AM 3 Urine Carboxy-THC
P2018-3472	1	134562	AM 3 Urine Carboxy-THC
P2018-3473	1	134563	AM 3 Urine Carboxy-THC
P2018-3476	1	134564	AM 3 Urine Carboxy-THC



Data Path : G:\TOX\Pocatello\MMS\CDS\2018\am 3 worklist 2841\
Data File : MJ-THC-PC1.D
Acq On : 16 Dec 2018 08:08
Operator : ISP\Datastor
Sample : Spiked Positive c-THC Control
Misc : c-THC lot # 0497429 in Negative Lot # POC062718; Worklist 2841
ALS Vial : 52 Sample Multiplier: 1

Integration Parameters: events.e
Integrator: ChemStation

Method : C:\gcms\1\methods\TOX.M
Title :

Signal : EIC Ion 371.00 (370.70 to 371.70): MJ-THC-PC1.D\data.ms

peak #	R.T. min	first scan	max scan	last scan	PK TY	peak height	corr. area	corr. % max.	% of total
1	6.642	103	124	153	VV	1667	36631	100.00%	94.938%
2	7.283	315	347	354	BV	73	1953	5.33%	5.062%

Sum of corrected areas: 38584

Signal : EIC Ion 473.00 (472.70 to 473.70): MJ-THC-PC1.D\data.ms

peak #	R.T. min	first scan	max scan	last scan	PK TY	peak height	corr. area	corr. % max.	% of total
1	6.643	82	125	154	BB	680	13607	100.00%	100.000%

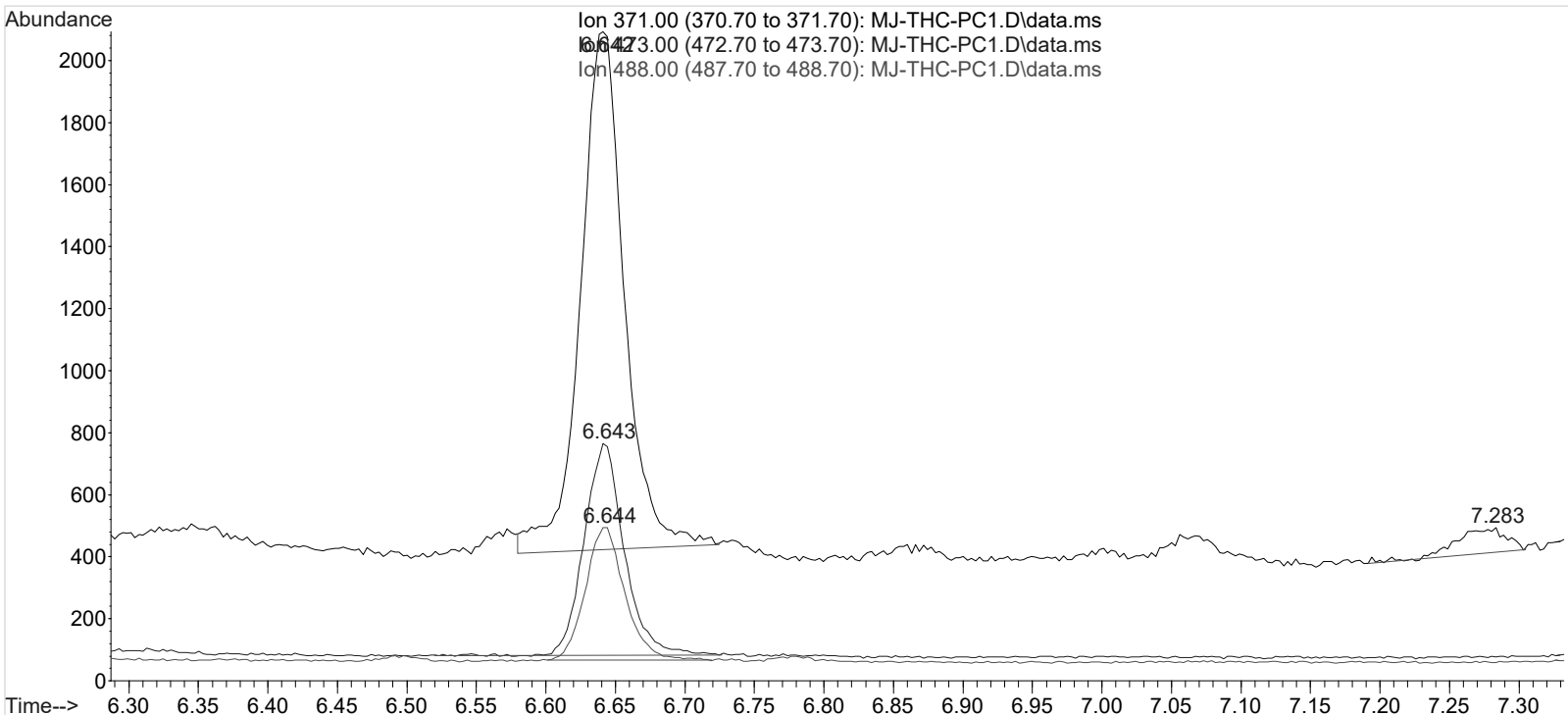
Sum of corrected areas: 13607

Signal : EIC Ion 488.00 (487.70 to 488.70): MJ-THC-PC1.D\data.ms

peak #	R.T. min	first scan	max scan	last scan	PK TY	peak height	corr. area	corr. % max.	% of total
1	6.644	110	125	151	BB	428	8434	100.00%	100.000%

Sum of corrected areas: 8434

TOX.M Tue Jan 08 11:21:39 2019



Data Path : G:\TOX\Pocatello\MMS\CDS\2018\am 3 worklist 2841\
Data File : MJ-THC-PC2.D
Acq On : 16 Dec 2018 17:46
Operator : ISP\Datastor
Sample : Spiked Positive c-THC Control
Misc : c-THC lot # 0497429 in Negative Lot # POC062718; Worklist 2841
ALS Vial : 52 Sample Multiplier: 1

Integration Parameters: events.e
Integrator: ChemStation

Method : C:\gcms\1\methods\TOX.M
Title :

Signal : EIC Ion 371.00 (370.70 to 371.70): MJ-THC-PC2.D\data.ms

peak #	R.T. min	first scan	max scan	last scan	PK TY	peak height	corr. area	corr. % max.	% of total
1	6.631	104	120	138	VV	1646	32803	100.00%	87.839%
2	7.057	258	269	281	PV	108	2070	6.31%	5.544%
3	7.264	318	340	355	BV	96	2471	7.53%	6.617%

Sum of corrected areas: 37344
Signal : EIC Ion 473.00 (472.70 to 473.70): MJ-THC-PC2.D\data.ms

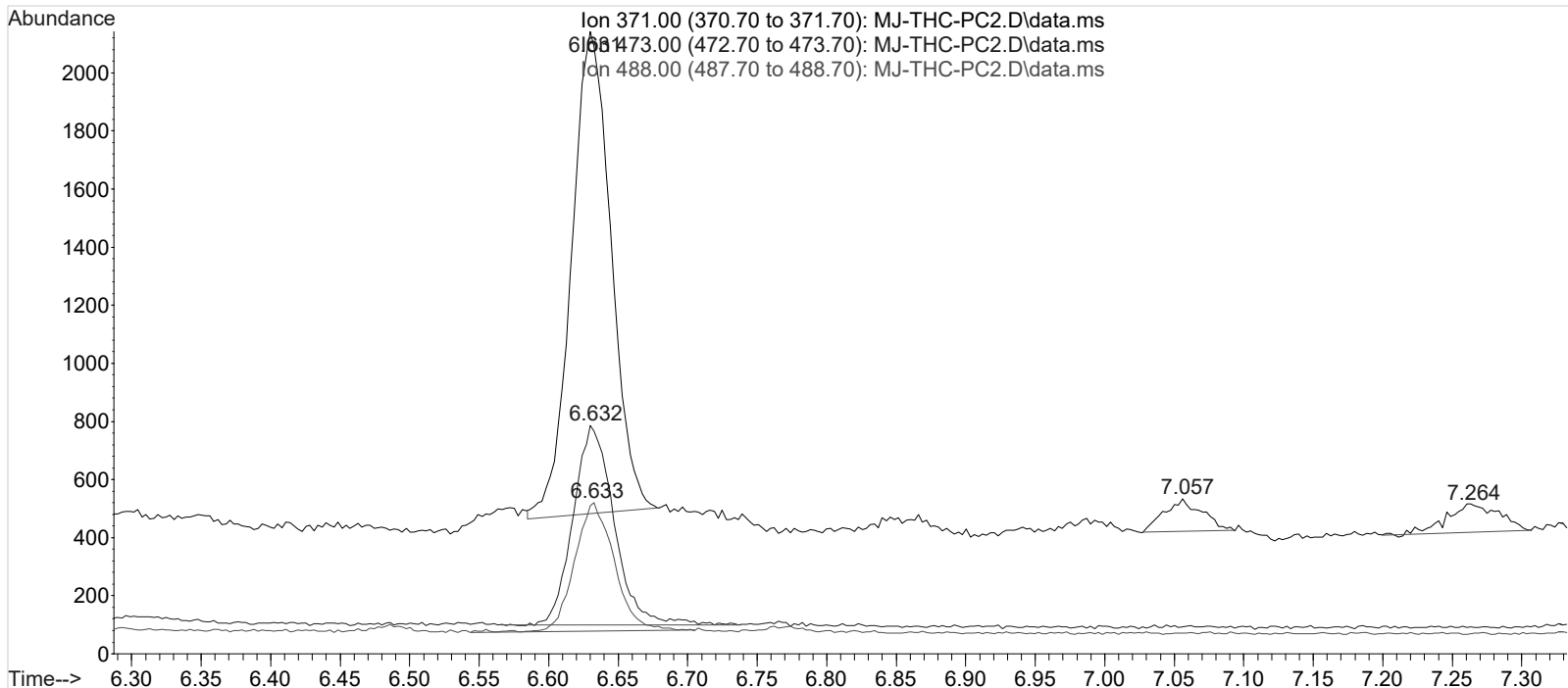
peak #	R.T. min	first scan	max scan	last scan	PK TY	peak height	corr. area	corr. % max.	% of total
1	6.632	98	121	158	BB	678	14112	100.00%	100.000%

Sum of corrected areas: 14112
Signal : EIC Ion 488.00 (487.70 to 488.70): MJ-THC-PC2.D\data.ms

peak #	R.T. min	first scan	max scan	last scan	PK TY	peak height	corr. area	corr. % max.	% of total
1	6.633	90	121	146	BV	439	8707	100.00%	100.000%

Sum of corrected areas: 8707

TOX.M Tue Jan 08 11:21:55 2019



Data Path : G:\TOX\Pocatello\MMS\CDS\2018\am 3 worklist 2841\
Data File : MJ-THC-NC.D
Acq On : 16 Dec 2018 07:58
Operator : ISP\Datastor
Sample : Negative Control
Misc : Lot # POC062718; AM #3 Worklist 2841
ALS Vial : 51 Sample Multiplier: 1

None Detected.

cg

Integration Parameters: events.e
Integrator: ChemStation

Method : C:\gcms\1\methods\TOX.M
Title :

Signal : EIC Ion 371.00 (370.70 to 371.70): MJ-THC-NC.D\data.ms

peak #	R.T. min	first scan	max scan	last scan	PK TY	peak height	corr. area	corr. % max.	% of total
--------	----------	------------	----------	-----------	-------	-------------	------------	--------------	------------

No peaks were detected using the method integration parameters!

Signal : EIC Ion 473.00 (472.70 to 473.70): MJ-THC-NC.D\data.ms

peak #	R.T. min	first scan	max scan	last scan	PK TY	peak height	corr. area	corr. % max.	% of total
--------	----------	------------	----------	-----------	-------	-------------	------------	--------------	------------

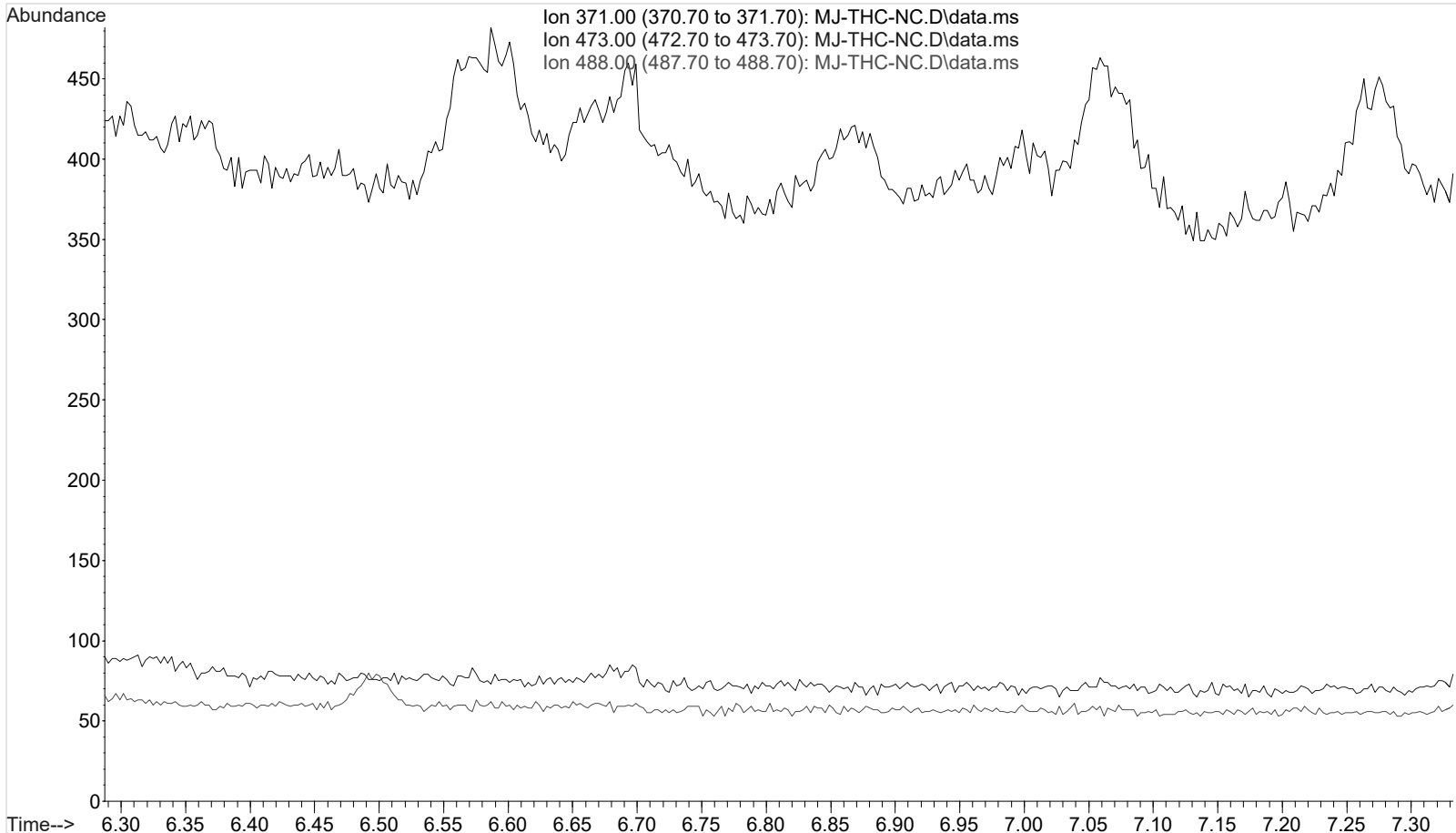
No peaks were detected using the method integration parameters!

Signal : EIC Ion 488.00 (487.70 to 488.70): MJ-THC-NC.D\data.ms

peak #	R.T. min	first scan	max scan	last scan	PK TY	peak height	corr. area	corr. % max.	% of total
--------	----------	------------	----------	-----------	-------	-------------	------------	--------------	------------

No peaks were detected using the method integration parameters!

TOX.M Tue Jan 08 11:22:13 2019



Data Path : G:\TOX\Pocatello\MMS\CDS\2018\am 3 worklist 2841\
Data File : MJ-THC-C3.D
Acq On : 16 Dec 2018 08:30
Operator : ISP\Datastor
Sample : Biorad C3 Control
Misc : C3 Lot # 68440; Worklist 2841
ALS Vial : 53 Sample Multiplier: 1

Integration Parameters: events.e
Integrator: ChemStation

Method : C:\gcms\1\methods\TOX.M
Title :

Signal : EIC Ion 371.00 (370.70 to 371.70): MJ-THC-C3.D\data.ms

peak #	R.T. min	first scan	max scan	last scan	PK TY	peak height	corr. area	corr. % max.	% of total
1	6.641	110	124	146	VV	428	8282	100.00%	100.000%

Sum of corrected areas: 8282

Signal : EIC Ion 473.00 (472.70 to 473.70): MJ-THC-C3.D\data.ms

peak #	R.T. min	first scan	max scan	last scan	PK TY	peak height	corr. area	corr. % max.	% of total
1	6.642	94	124	146	BB	168	3286	100.00%	100.000%

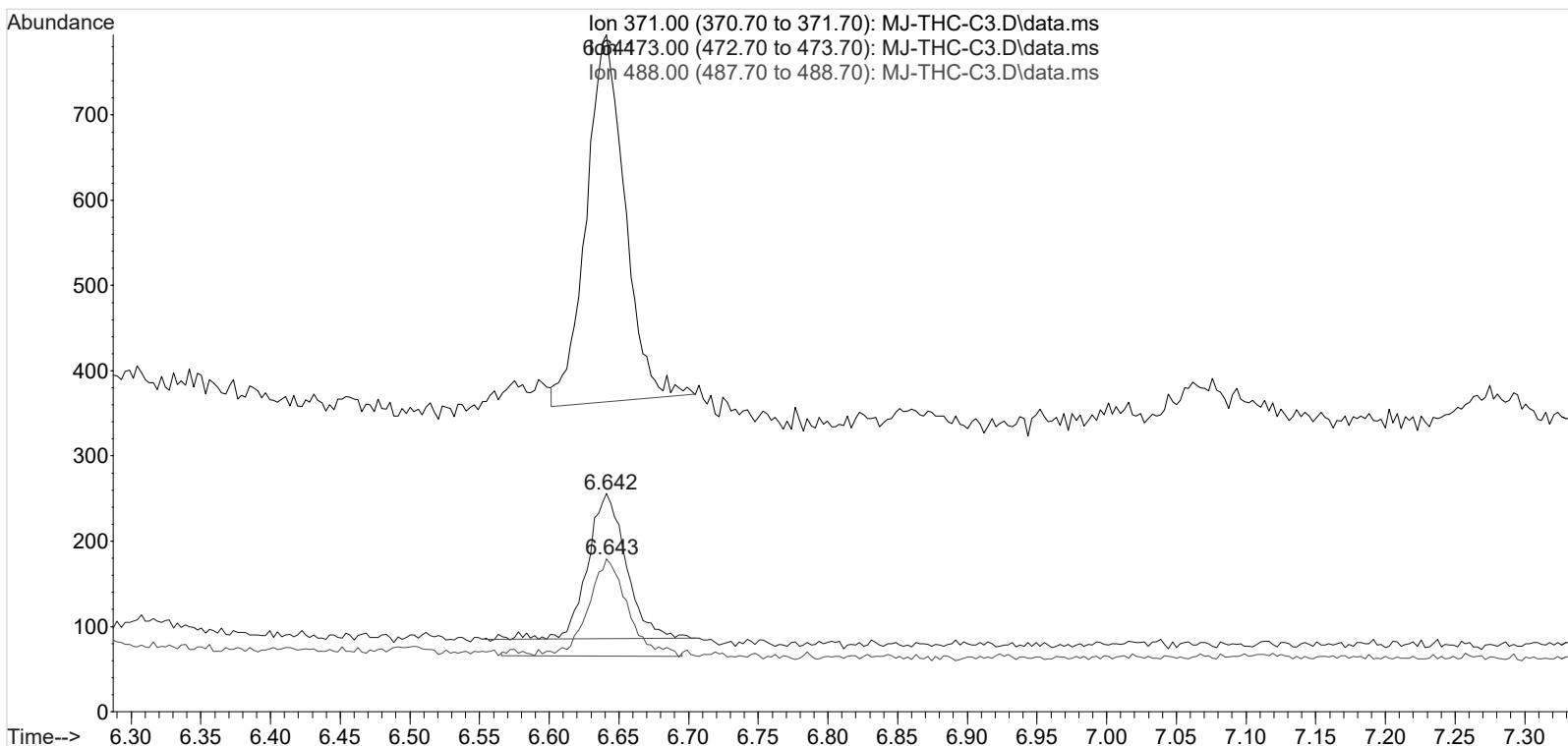
Sum of corrected areas: 3286

Signal : EIC Ion 488.00 (487.70 to 488.70): MJ-THC-C3.D\data.ms

peak #	R.T. min	first scan	max scan	last scan	PK TY	peak height	corr. area	corr. % max.	% of total
1	6.643	98	125	143	BV	112	2249	100.00%	100.000%

Sum of corrected areas: 2249

TOX.M Tue Jan 08 11:22:26 2019



AM 3 carboxy-THC Calculations Sheet

Run Date: 12/16/2018

Worklist #: 2841

Laboratory Case #: BioRad C3: 68440

Case Calculations:

EIC Ion 371 Corr. Area: 8282

EIC Ion 473 Corr. Area: 3286

EIC Ion 488 Corr. Area: 2249

473:371 Ratio: 0.397

488:371 Ratio: 0.272

Quality Control Calculations:

1st Control

2nd Control

EIC Ion 371 Corr. Area: 36631

32803

EIC Ion 473 Corr. Area: 13607

14112

EIC Ion 488 Corr. Area: 8434

8707

Ratio of 473:371: 0.371

0.430

Average: 0.401

Ratio of 488:371: 0.230

0.265

Average: 0.248

Acceptable Retention Time Range: 6.542

to 6.731

Approximate Minimum Corrected Area of 371 Ion: 7326

Acceptable 473:371 Ratio Range: 0.321

to 0.481

Acceptable 488:371 Ratio Range: 0.198

to 0.297